

# ALUMINUM CYLINDERS

## ADHC-SERIES

**CAPACITY:** 30 & 60 Tons

**STROKE:** 50 - 250 mm

Hollow, Double Acting

**MAX. WORKING PRESSURE:** 700 bar/ 10,000 psi

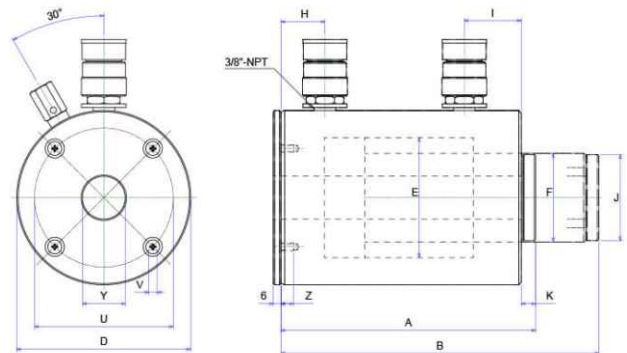
### FEATURES

- Half weight of the steel cylinders.
- Steel piston regarding protection against load damage.
- Chrome plated center sleeve for extra protection.
- Carrying handles are equipped with all models.
- Hard-Anodized coating reduces wear & corrosion.
- Stop rings for piston blow-out protection.
- Rod wiper protects inner rod from dirt.



### Base Plate Mounting Holes Dimensions (mm)

Model No. / Capacity (ton)	Bolt Circle U (mm)	Thread V (mm)	Thread Depth Z (mm)
	ADHC-30	110	M6x1.0
ADHC-60	160	M6x1.0	10



### SPECIFICATIONS

Model No.	Capacity (ton)	Stroke (mm)	Max. Cylinder Capacity (tons)		Cylinder Effective Area (cm <sup>2</sup> )		Oil Capacity (cm <sup>3</sup> )		Collapsed Height A (mm)	Extended Height B (mm)	Outside Diameter D (mm)	Cylinder Bore Diam E (mm)	Plunger Diameter F (mm)	Base to Advance Port H (mm)	Top to Retract Port I (mm)	Saddle Diameter J (mm)	Saddle Protrusion from Plunger K (mm)	Center Hole Dia. Y (mm)	Weight (kgs)
			Push	Pull	Push	Pull	Push	Pull											
ADHC302	20	50	38.5	22.7	55	32.4	275	162	202	252	138	95	70	35	45	68	11.5	34	9.6
ADHC306		150					825	486	327	477	138	95	70	35	45	68	11.5	34	14.8
ADHC3010		250					1374	810	430	680	138	95	70	35	45	68	11.5	34	16.0
ADHC602	30	50	62.6	31	89.5	44.2	448	221	250	300	200	125	100	50	50	89	14	54	15.5
ADHC606		150					1342	662	350	500	200	125	100	50	50	89	14	54	23.0
ADHC6010		250					2237	1104	433	683	200	125	100	50	50	89	14	54	30.5